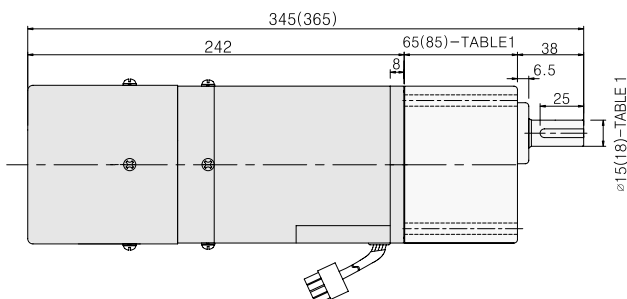


7. 180W

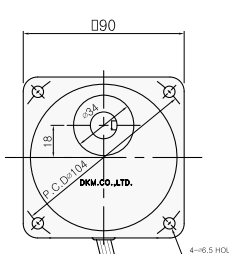
● LEAD WIRE TYPE

◆ GEARED MOTOR

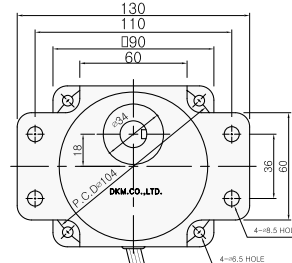
* MOTOR MODEL : 9SBDG□-180F2P(H)(POWERFUL FAN)



* GEARHEAD MODEL :
9PB □ 3BH - 9PB □ 180BH

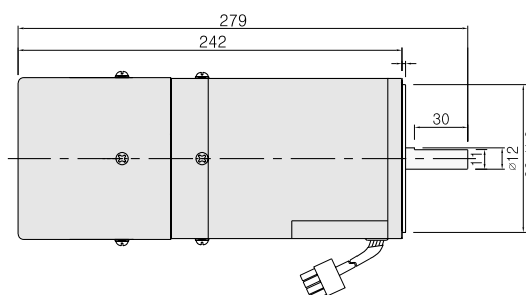


* GEARHEAD MODEL :
9PF □ 3BH - 9PF □ 180BH

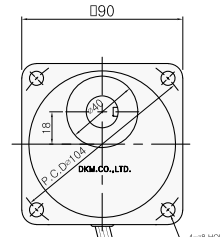
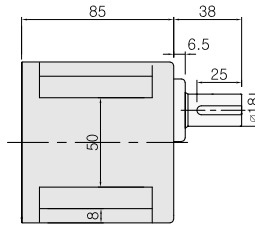
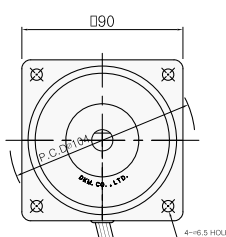


◆ MOTOR ONLY

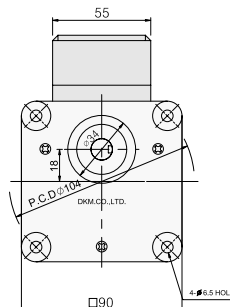
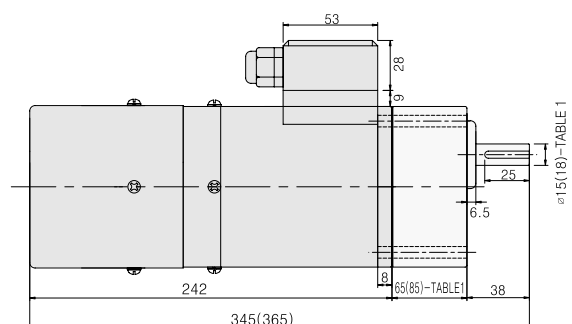
* MOTOR MODEL : 9SBD □ □ - 180 F2 (POWERFUL FAN)



* GEARHEAD MODEL : 9HB □ 3BH - 9HB □ 180BH

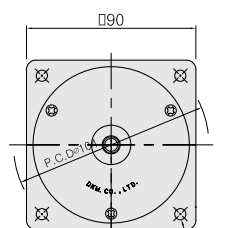
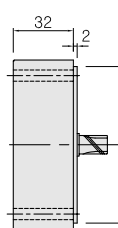


● TERMINAL BOX TYPE * MOTOR MODEL : 9SBDG□-180F2P(H)-T (POWERFUL FAN)



◆ INTER-DECIMAL GEARHEAD

* MODEL : 9XD10M□



* Note : For speed control motor, powerful Fan(F2) is basic specification.

◆ 65(85)-TABLE1

| SIZE(mm) | GEARHEAD TYPE |
|----------|-----------------|
| 65 ~ φ15 | P TYPE GEARHEAD |
| 85 ~ φ18 | H TYPE GEARHEAD |

◆ KEY SPEC

| MOTOR | GEARHEAD |
|-------|----------|
| | |

◆ WEIGHT

| PART | | WEIGHT(Kg) | |
|------------------|----------------------------------|------------|--------|
| MOTOR | | 3.8 | |
| DECIMAL GEARHEAD | | 0.5 | |
| GEAR HEAD | GEARHEAD TYPE | P TYPE | H TYPE |
| | 9P(H)□□ 3BH - 9P(H)□□ 9BH | 1.3 | 1.45 |
| | 9P(H)□□ 12.5BH - 9P(H)□□ 18BH | 1.3 | 1.5 |
| | 9P(H)□□ 25BH - 9P(H)□□ 60BH | 1.4 | 1.7 |
| | 9P(H)□□ 90BH - 9P(H)□□ 180BH | 1.4 | 1.8 |

◆ GEARHEAD OUTPUT

| MODEL | P TYPE | H TYPE |
|----------------------------------|--------|--------|
| ROUND TYPE | | |
| 9P(H)□□ 3BH ~ 9P(H)□□ 180BH | | |
| D-CUT TYPE | | |
| 9P(H)□□ 3BH ~ 9P(H)□□ 180BH | | |
| KEY TYPE | | |
| 9P(H)□□ K3BH ~ 9P(H)□□ K180BH | | |

◆ MOTOR OUTPUT

| MODEL | SHAFT |
|------------------|----------|
| GEAR TYPE | 18.5(22) |
| 9SBDG□-180□ P(H) | |
| ROUND TYPE | 37 |
| 9SBD□-180□ | |
| D-CUT TYPE | 37 |
| 9SBD□-180□ | |
| KEY TYPE | 37 |
| 9SBDK□-180□ | |

* Note : Above table indicates output shaft dimension made by user's request and ★ indicates the basic dimension in factory shipping.