

B AC Motors

Clutch & Brake Motor 25W (□80mm)

25W Clutch & Brake Motor
25W(□80mm)

 **Motor Image**



Motor Specification

Model 8CIDG□-25G: Gear Type Shaft	Output W	Voltage V	Frequency Hz	Poles	Duty	Starting Torque		Rated Load				Capacitor μF / VAC
						kgfcm	N.m	Speed r/min	Current A	Torque kgfcm N.m		
8CIDGA-25G	25	1∅110	60	4	Cont.	1.67	0.167	1550	0.46	1.58	0.158	6.0 / 250
8CIDGD-25G	25	1∅220	60	4	Cont.	2.00	0.200	1600	0.27	1.60	0.160	2.0 / 450
8CIDGE-25G	25	1∅220	50	4	Cont.	1.10	0.110	1200	0.23	2.10	0.210	1.3 / 450
		1∅240				1.30	0.130		0.25	2.20	0.220	
8CIDGG-25G	25	3∅220	50	4	Cont.	5.00	0.500	1300	0.32	2.00	0.200	-
			60			0.40	0.040	1600	0.25	1.60	0.160	
8CIDGK-25G	25	3∅380	50	4	Cont.	3.60	0.360	1250	0.14	2.00	0.200	-
			60			3.00	0.300	1500	0.12	1.65	0.165	
		3∅400	50	4	Cont.	3.80	0.380	1250	0.15	2.20	0.220	
			60			3.20	0.320	1500	0.13	1.80	0.180	
		3∅415	50	4	Cont.	4.10	0.410	1300	0.15	2.00	0.200	
			60			3.40	0.340	1550	0.13	1.80	0.180	
		3∅440	50	4	Cont.	4.40	0.440	1300	0.17	2.20	0.220	
			60			3.60	0.360	1600	0.14	1.60	0.160	

- 1) Enter the phase & voltage code in the in the box (□) within the motor model name.
- 2) All models contain a built-in thermal protector.
- 3) For using clutch & brake motor, Gearbox has to be attached. (Output shaft of motor: Gear Type Shaft)

Max. Permissible Torque at Output Shaft of Gearbox

60Hz

Motor Model	Gearbox Model	Gear Ratio r/min	3	3.6	5	6	7.5	9	12.5	15	18	25	30	36	40	50	60	75	90	100	120	150	180
			8CIDG□-25G	8GBK□BMH	kgfcm N.m	600 0.44	500 0.53	360 0.73	300 0.88	240 1.10	200 1.32	144 1.83	120 2.20	100 2.64	72 3.31	60 3.97	50 4.32	45 4.80	36 6.00	30 7.20	24 7.84	20 7.84	18 7.84

Motor Model	Gearbox Model	Gear Ratio r/min	200	250	300	360
			8CIDG□-25G	8GBK□BMH	kgfcm N.m	80.0 7.84

50Hz

Motor Model	Gearbox Model	Gear Ratio r/min	3	3.6	5	6	7.5	9	12.5	15	18	25	30	36	40	50	60	75	90	100	120	150	180
			8CIDG□-25G	8GBK□BMH	kgfcm N.m	500 0.54	417 0.64	300 0.89	250 1.07	200 1.34	167 1.61	120 2.24	100 2.68	83 3.22	60 4.04	50 4.85	42 5.28	38 5.86	30 7.33	25 7.84	20 7.84	17 7.84	15 7.84

Motor Model	Gearbox Model	Gear Ratio r/min	200	250	300	360
			8CIDG□-25G	8GBK□BMH	kgfcm N.m	80.0 7.84

- 1) Enter the phase & voltage code in the box (□) within the motor model name.
- 2) Enter the gear ratio in the box (□) within the Gearbox model name.
- 3) A colored background indicates gear shaft rotation in the same direction as the motor shaft; a white background indicates rotation in the opposite direction.
- 4) The rotating speed is calculated by dividing the motor's synchronous speed (50Hz: 1,500r/min, 60Hz: 1,800r/min) by the gear ratio.
The actual speed is 2~20% less than the displayed value, depending on the size of the load.

Dimensions

GEARED MOTOR

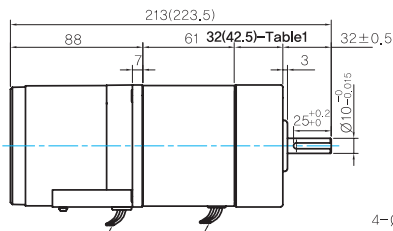
G TYPE GEARBOX

- MOTOR MODEL:
8CIDG□-25G (NO FAN)

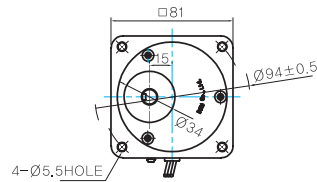
- GEARBOX MODEL:
8GBK□BMH

GEARBOX OUTPUT SHAFT

32(42.5)-Table1



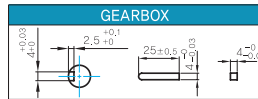
LEAD WIRE 300mm C&B LEADWIRE 300mm
UL STYLE NO,3271 AWG NO,22



MODEL	SPEC
KEY TYPE	

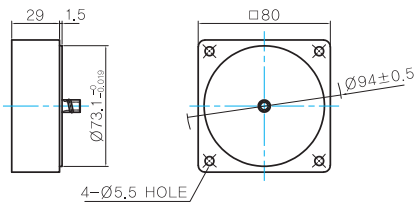
SIZE(mm)	GEAR RATIO
32	8GBK3BMH - 8GBK18BMH
42,5	8GBK25BMH - 8GBK360BMH

KEY SPEC



INTER-DECIMAL GEARBOX

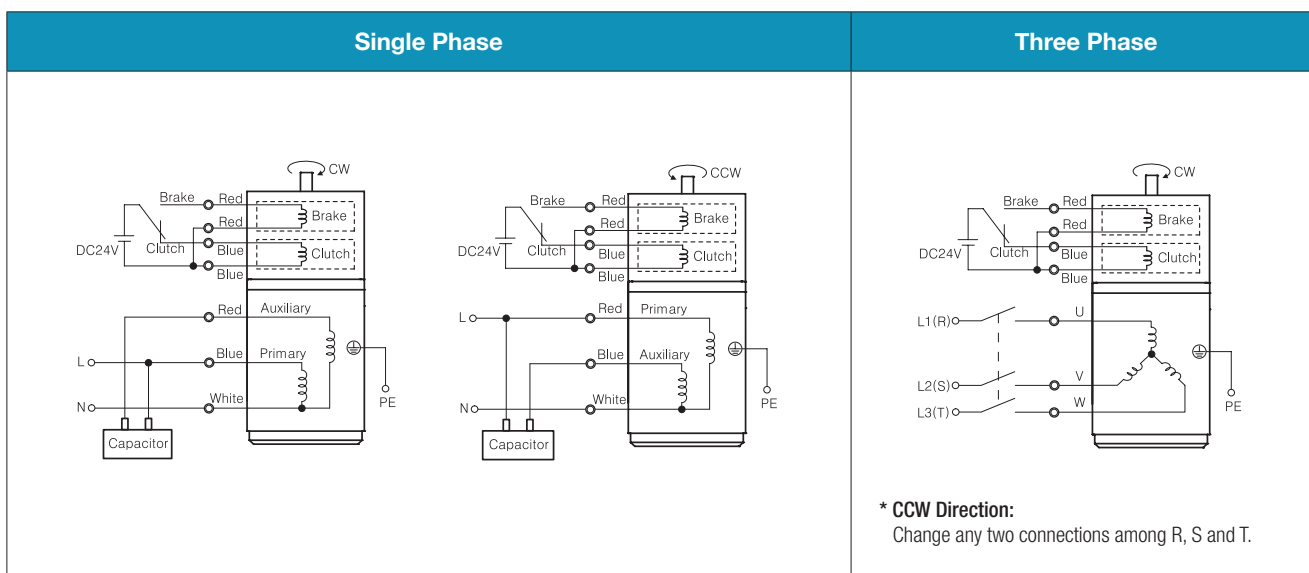
- MODEL:
8XD10□□



WEIGHT

PART	WEIGHT(Kg)	
MOTOR	1,6	
CLUTCH & BRAKE	1,05	
GEAR BOX	8GBK3BMH - 8GBK18BMH	0,48
	8GBK25BMH - 8GBK30BMH	0,61
	8GBK36BMH - 8GBK180BMH	0,67
	8GBK200BMH - 8GBK360BMH	0,63
	8XD10□□	0,44

Connection Diagrams



- The direction of motor rotation is as viewed from the shaft end of the motor.
- CW represents the clockwise direction, while CCW represents the counterclockwise direction.
- Change the direction of single phase motor rotation only after bringing the motor to a stop. If an attempt is made to change the direction of rotation while the motor is rotating, the motor may ignore the reversing command or change its direction after some delay.