

Reversible Motor 25W(□ 80mm)

25W

Reversible Motor
25W(□ 80mm)

Motor Specification

Model		Output W	Voltage V	Frequency Hz	Poles	Duty	Starting Torque		Rated Load			Capacitor μF / VAC	
8RDG*-25□(-T): Gear Type Shaft 8RDD*-25(-T): D-Cut Type Shaft	Lead Wire Type						Terminal Box Type	kgfcm	N.m	Speed r/min	Current A		Torque kgfcm N.m
8RDGA-25□	8RDGA-25□-T	25	1∅110	60	4	30min.	2.40	0.240	1550	0.73	1.62	0.162	10.0 / 250
8RDGD-25□	8RDGD-25□-T	25	1∅220	60	4	30min.	2.40	0.240	1550	0.36	1.62	0.162	2.5 / 450
8RDGE-25□	8RDGE-25□-T	25	1∅220	50	4	30min.	2.10	0.210	1250	0.28	2.00	0.200	2.0 / 450
			1∅240				2.50	0.250		0.30	2.10	0.210	

- 1) Enter the phase & voltage code in the place * and enter the model type of attaching Gearbox in the box (□) within the motor model name.
- 2) All models contain a built-in thermal protector.
- 3) Gear Type Shaft is for attaching Gearbox and D-Cut Type Shaft is for using motor only.

Max. Permissible Torque at Output Shaft of Gearbox

60Hz

Motor Model	Gearbox Model	Gear Ratio	3	3.6	5	6	7.5	9	12.5	15	18	25	30	36	40	50	60	75	90	100	120	150	180
			r/min	600	500	360	300	240	200	144	120	100	72	60	50	45	36	30	24	20	18	15	12
8RDG□-25G	8GBK□ BMH	kgfcm	4.0	4.8	6.7	8.1	10.1	12.1	16.8	20.2	24.2	30.38	36.45	39.66	44.06	55.08	66.10	80.00	80.00	80.00	80.00	80.00	80.00
		N.m	0.40	0.47	0.66	0.79	0.99	1.19	1.65	1.98	2.37	2.98	3.57	3.89	4.32	5.40	6.48	7.84	7.84	7.84	7.84	7.84	7.84

Motor Model	Gearbox Model	Gear Ratio	200	250	300	360	Motor Model	Gearbox Model	Gear Ratio	10	12	15	18	25	30	36	50	60
			r/min	9	7	6				5	r/min	180	150	120	100	72	60	50
8RDG□-25G	8GBK□BMH	kgfcm	80.0	80.0	80.0	80.0	8RDG□-25W	8WD□BL/□BR/ □BRL	kgfcm	13.3	15.6	18.7	21.6	28.4	32.1	37.3	48.6	53.5
		N.m	7.84	7.84	7.84	7.84			N.m	1.30	1.52	1.83	2.11	2.78	3.14	3.66	4.76	5.24

50Hz

Motor Model	Gearbox Model	Gear Ratio	3	3.6	5	6	7.5	9	12.5	15	18	25	30	36	40	50	60	75	90	100	120	150	180
			r/min	500	417	300	250	200	167	120	100	83	60	50	42	38	30	25	20	17	15	13	10
8RDG□-25G	8GBK□ BMH	kgfcm	5.2	6.3	8.7	10.5	13.1	15.7	21.8	26.1	31.4	39.4	47.3	51.4	57.1	71.4	80.0	80.0	80.0	80.0	80.0	80.0	80.0
		N.m	0.51	0.61	0.85	1.02	1.28	1.54	2.14	2.56	3.07	3.86	4.63	5.04	5.60	7.00	7.84	7.84	7.84	7.84	7.84	7.84	7.84

Motor Model	Gearbox Model	Gear Ratio	200	250	300	360	Motor Model	Gearbox Model	Gear Ratio	10	12	15	18	25	30	36	50	60
			r/min	7	6	5				5	r/min	150	125	100	83	60	50	42
8RDG□-25G	8GBK□BMH	kgfcm	80.0	80.0	80.0	80.0	8RDG□-25W	8WD□BL/□BR/ □BRL	kgfcm	17.2	20.2	24.3	28.0	36.8	41.6	48.4	63.0	69.3
		N.m	7.84	7.84	7.84	7.84			N.m	1.69	1.98	2.38	2.74	3.60	4.07	4.74	6.17	6.79

- 1) Enter the phase & voltage code in the box (□) within the motor model name.
- 2) Enter the gear ratio in the box (□) within the Gearbox model name.
- 3) A colored background indicates gear shaft rotation in the same direction as the motor shaft; a white background indicates rotation in the opposite direction.
- 4) The rotating speed is calculated by dividing the motor's synchronous speed (50Hz: 1,500r/min, 60Hz: 1,800r/min) by the gear ratio.
The actual speed is 2~20% less than the displayed value, depending on the size of the load.

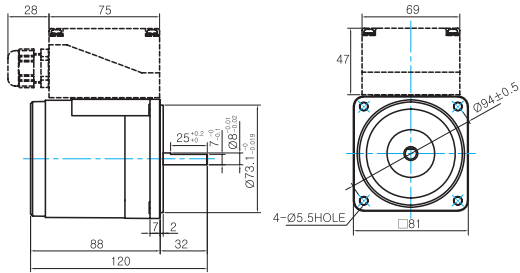
B AC Motors

Reversible Motor 25W(□80mm)

Dimensions

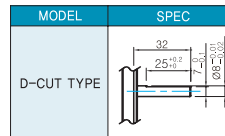
MOTOR ONLY

- MOTOR MODEL: 8RDD□-25(-T) (NO FAN)

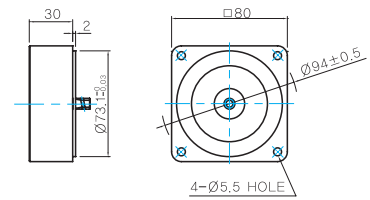


INTER-DECIMAL GEARBOX

- MOTOR OUTPUT SHAFT



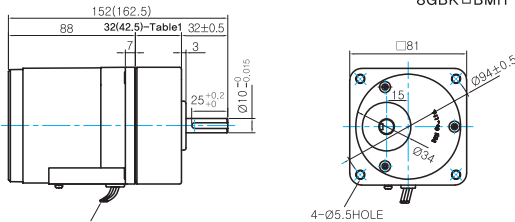
- MODEL: 8XD10□□



GEARED MOTOR

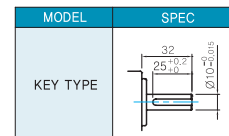
G TYPE GEARBOX

- MOTOR MODEL: 8RDG□-25G (NO FAN)
- GEARBOX MODEL: 8GBK□BMH

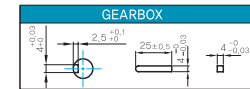


LEAD WIRE 300mm
UL STYLE NO.3271 AWG NO.22

- GEARBOX OUTPUT SHAFT



- KEY SPEC

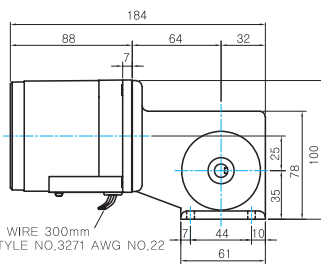


- 30(40)-Table1

SIZE(mm)	GEAR RATIO
32	8GBK3BMH - 8GBK18BMH
42.5	8GBK25BMH - 8GBK360BMH

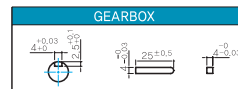
W TYPE GEARBOX

- MOTOR MODEL: 8RDG□-25W (NO FAN)
- GEARBOX MODEL: 8WD□BL/BR/BRL



LEAD WIRE 300mm
UL STYLE NO.3271 AWG NO.22

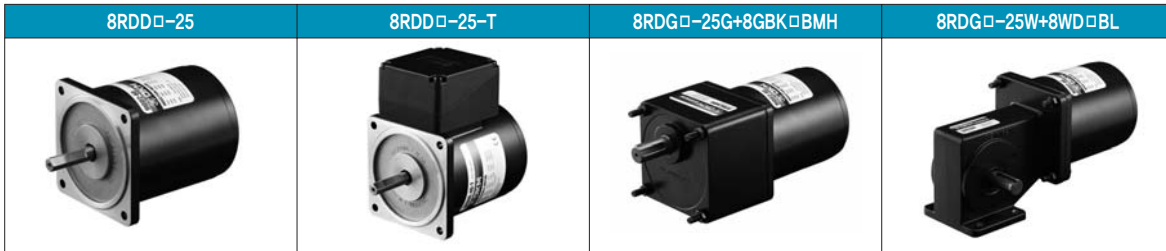
- KEY SPEC



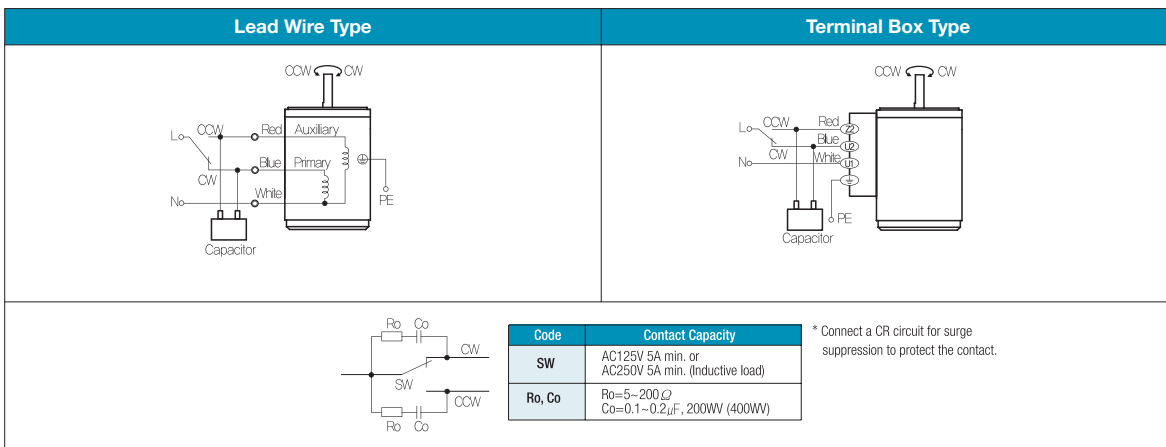
WEIGHT

PART	WEIGHT(Kg)	
MOTOR	1.6	
GEAR BOX	8GBK3BMH ~ 8GBK18BMH	0.48
	8GBK25BMH ~ 8GBK30BMH	0.61
	8GBK36BMH ~ 8GBK180BMH	0.67
	8GBK200BMH ~ 8GBK360BMH	0.63
	8WD□BL/BR/BRL	0.67
8XD10M□□	0.44	

Motor Images



Connection Diagrams



- 1) The direction of motor rotation is as viewed from the shaft end of the motor.
- 2) CW represents the clockwise direction, while CCW represents the counterclockwise direction.
- 3) During operation it is available to change the rotating direction by turning the switch to CW or CCW.