
Speed Control
Reversible Motor

**15, 25, 40,
60, 90, 120W**



DSA CONTROLLER
(Unit type)

DSK CONTROLLER
(Socket type)

■ **Motor Specification**

Please refer to the page of SPEED CONTROL MOTOR.

■ **Permissible Torque When using gearhead**

Please refer to the page of SPEED CONTROL MOTOR.

■ **Connection Diagrams**

Please refer to the page of SPEED CONTROL MOTOR.

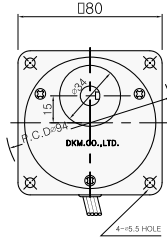
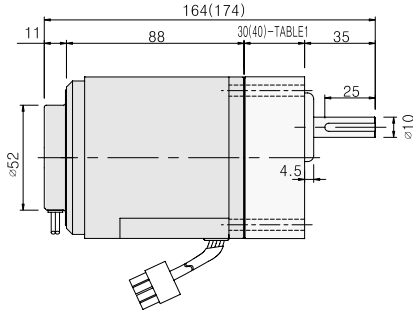
■ **Dimension**

Please refer to the page of SPEED CONTROL MOTOR.

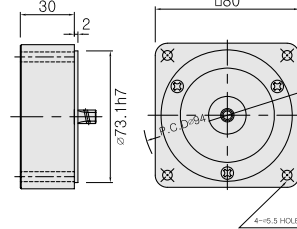
Dimension

LEAD WIRE TYPE

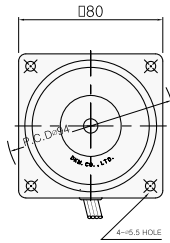
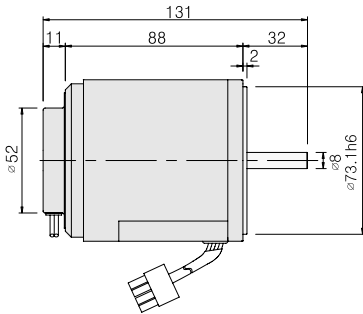
- ◆ GEARED MOTOR * MOTOR MODEL : 8SRD□-1.5G(NO FAN)
* GEARHEAD MODEL : 8GB□3BMH - 8GB□360BMH



- ◆ INTER-DECIMAL GEARHEAD * MODEL : 8XD10M□



- ◆ MOTOR ONLY * MOTOR MODEL : 8SRD□-1.5(NO FAN)

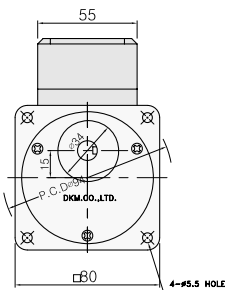
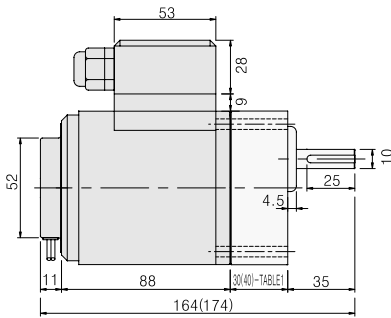


GEARHEAD OUTPUT

MODEL	SHAFT
ROUND TYPE	
8GBS3BMH ~8GBS360BMH	
D-CUT TYPE	
8GBD3BMH ~8GBD360BMH	
KEY TYPE	
8GBK3BMH ~8GBK360BMH	★

TERMINAL BOX TYPE

- * MOTOR MODEL : 8SRD□-1.5G-T(NO FAN)



KEY SPEC

MOTOR	GEARHEAD

30(40)-TABLE1

SIZE(mm)	GEAR RATIO
30	8GB□3BMH - 8GB□18BMH
40	8GB□25BMH - 8GB□360BMH

WEIGHT

PART	WEIGHT(Kg)	
MOTOR	1.7	
DECIMAL GEARHEAD	0.44	
GEAR HEAD	8GB□3BMH - 8GB□18BMH	0.48
	8GB□25BMH - 8GB□30BMH	0.61
	8GB□60BMH - 8GB□180BMH	0.67
	8GB□200BMH - 8GB□360BMH	0.63

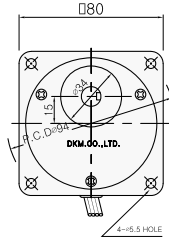
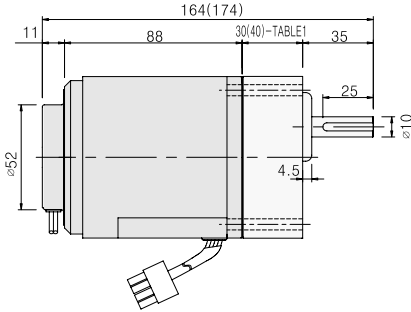
MOTOR OUTPUT

MODEL	SHAFT
GEAR TYPE	
8SRD□-1.5G	
ROUND TYPE	
8SRDS□-1.5	★
D-CUT TYPE	
8SRDD□-1.5	
KEY TYPE	
8SRDK□-1.5	

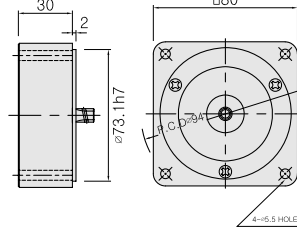
2. 25W

● LEAD WIRE TYPE

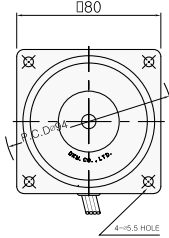
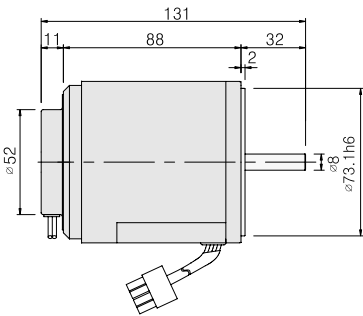
- ◆ GEARED MOTOR * MOTOR MODEL : 8SRDG□-25G(NO FAN)
* GEARHEAD MODEL : 8GB□3BMH - 8GB□360BMH



- ◆ INTER-DECIMAL GEARHEAD * MODEL : 8XD10M□

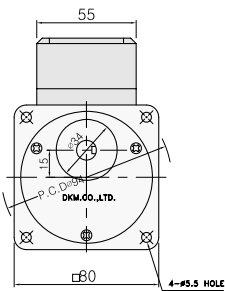
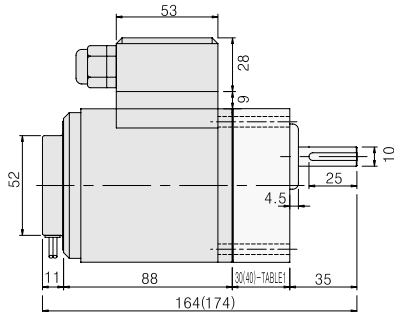


- ◆ MOTOR ONLY * MOTOR MODEL : 8SRD□□-25(NO FAN)



● TERMINAL BOX TYPE

- * MOTOR MODEL : 8SRDG□-25G-T(NO FAN)



◆ KEY SPEC

MOTOR	GEARHEAD

◆ 30(40)-TABLE 1

SIZE(mm)	GEAR RATIO
30	8GB□3BMH - 8GB□18BMH
40	8GB□25BMH - 8GB□360BMH

◆ WEIGHT

PART	WEIGHT(Kg)	
MOTOR	1.7	
DECIMAL GEARHEAD	0.44	
GEAR HEAD	8GB□3BMH - 8GB□18BMH	0.48
	8GB□25BMH - 8GB□30BMH	0.61
	8GB□60BMH - 8GB□180BMH	0.67
	8GB□200BMH - 8GB□360BMH	0.63

◆ GEARHEAD OUTPUT

MODEL	SHAFT
ROUND TYPE 8GBS3BMH ~8GBS360BMH	
D-CUT TYPE 8GBD3BMH ~8GBD360BMH	
KEY TYPE 8GBK3BMH ~8GBK360BMH	

◆ MOTOR OUTPUT

MODEL	SHAFT
GEAR TYPE 8SRDG□-25G	
ROUND TYPE 8SRDS□-25	
D-CUT TYPE 8SRDD□-25	
KEY TYPE 8SRDK□-25	

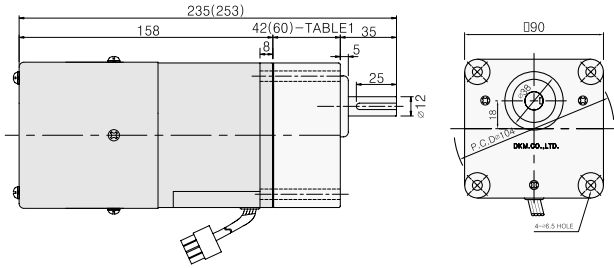
* Note : Above table indicates output shaft dimension made by user's request and ★ indicates the basic dimension in factory shipping.

3. 40W

● LEAD WIRE TYPE

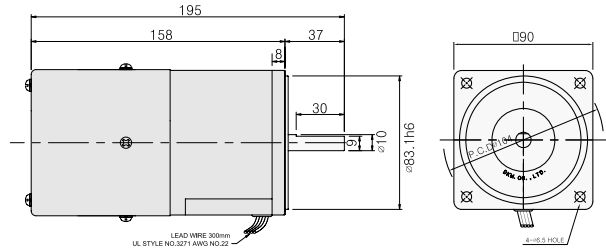
◆ GEARED MOTOR

- * MOTOR MODEL : 9SRDG□-40F2G (POWERFUL FAN)
- * GEARHEAD MODEL : 9GB□3MH - 9GB□180MH



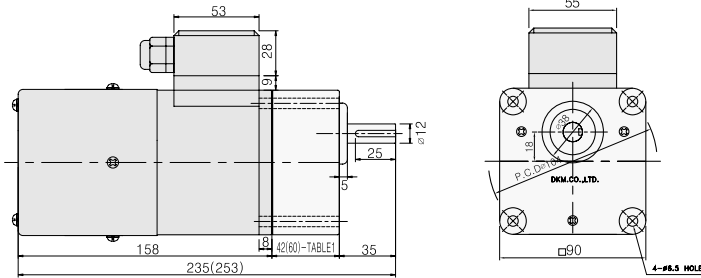
◆ MOTOR ONLY

- * MOTOR MODEL : 9SRD□□-40F2 (POWERFUL FAN)



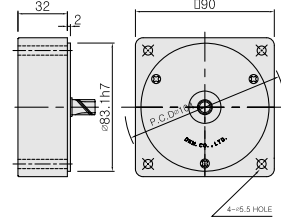
● TERMINAL BOX TYPE

- * MOTOR MODEL : 9SRDG□-40F2G-T (POWERFUL FAN)



◆ INTER-DECIMAL GEARHEAD

- * MODEL : 9XD10M□

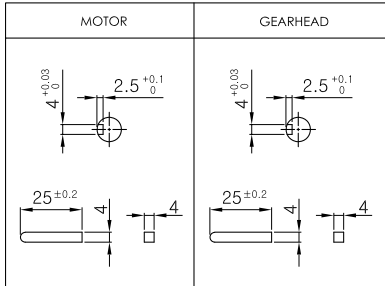


◆ MOTOR OUTPUT

MODEL	SHAFT
GEAR TYPE	17.5
9SRDG□-40G	
ROUND TYPE	37
9SRDS□-40	
D-CUT TYPE	37
9SRD□-40	
KEY TYPE	37
9SRDK□-40	

* Note : For speed control motor , powerful Fan (F2) is basic specification.

◆ KEY SPEC



◆ 42(60)-TABLE1

SIZE(mm)	GEAR RATIO
42	9GB□3MH - 9GB□15MH
60	9GB□18MH - 9GB□180MH

◆ WEIGHT

PART	WEIGHT(Kg)	
MOTOR	2.5	
DECIMAL GEARHEAD	0.5	
GEAR HEAD	9GB□3MH - 9GB□15MH	0.67
	9GB□18MH - 9GB□30MH	0.96
	9GB□36MH - 9GB□180MH	1.07

◆ GEARHEAD OUTPUT

MODEL	SHAFT
ROUND TYPE	35
9GBS3MH - 9GBS180MH	
D-CUT TYPE	35
9GBD3MH - 9GBD180MH	
KEY TYPE	35
9GBK3MH - 9GBK180MH	

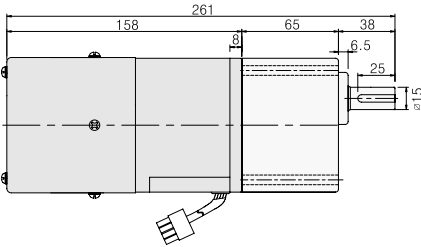
* Note : Above table indicates output shaft dimension made by user's request and ★ indicates the basic dimension in factory shipping.

4. 60W

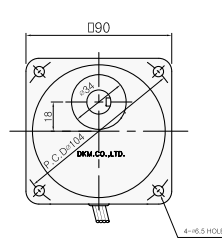
● LEAD WIRE TYPE

◆ GEARED MOTOR

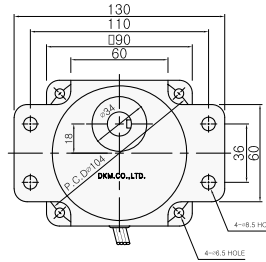
* MOTOR MODEL : 9SRDG□-60F2P (POWERFUL FAN)



* GEARHEAD MODEL :
9PB□3BH - 9PB□180BH

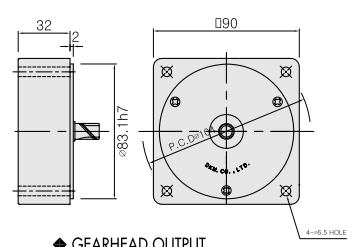


* GEARHEAD MODEL :
9PF□3BH - 9PF□180BH



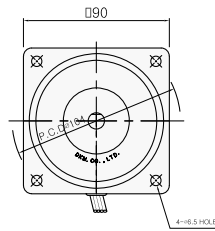
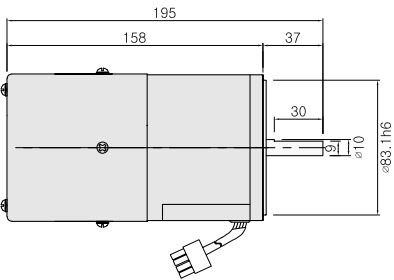
◆ INTER-DECIMAL GEARHEAD

* MODEL : 9XD10M□



◆ MOTOR ONLY

* MOTOR MODEL : 9SRDG□□-60F2 (POWERFUL FAN)

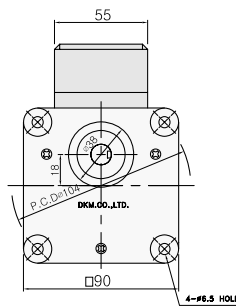
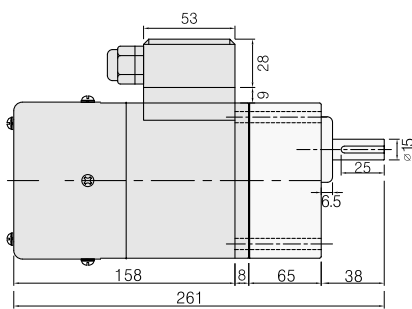


◆ GEARHEAD OUTPUT

MODEL	SHAFT
ROUND TYPE 9P□S3BH ~9P□S180BH	
D-CUT TYPE 9P□D3BH ~9P□D180BH	
KEY TYPE 9P□K3BH ~9P□K180BH	

● TERMINAL BOX TYPE

* MOTOR MODEL : 9SRDG□-60F2P (POWERFUL FAN)



◆ KEY SPEC

MOTOR	GEARHEAD

◆ WEIGHT

PART	WEIGHT(Kg)	
MOTOR	2.7	
DECIMAL GEARHEAD	0.5	
GEAR HEAD	9P□3BH - 9P□9BH	1.3
	9P□12.5BH - 9P□18BH	1.3
	9P□25BH - 9P□60BH	1.4
	9P□90BH - 9P□180BH	1.4

◆ MOTOR OUTPUT

MODEL	SHAFT
GEAR TYPE 9SRDG□-60□P	
ROUND TYPE 9SRDS□-60□	
D-CUT TYPE 9SRDD□-60□	
KEY TYPE 9SRDK□-60□	

* Note : For speed control motor, powerful Fan(F2) is basic specification.

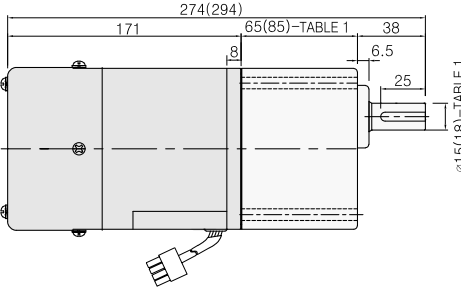
* Note : Above table indicates output shaft dimension made by user's request and ★ indicates the basic dimension in factory shipping.

5. 90W

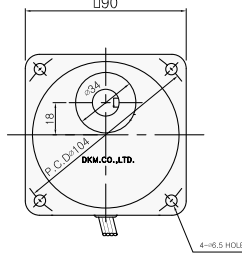
● LEAD WIRE TYPE

◆ GEARED MOTOR

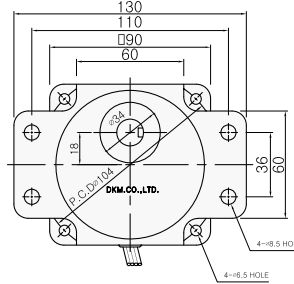
* MOTOR MODEL : 9SRDG□-90F2P(H) (POWERFUL FAN)



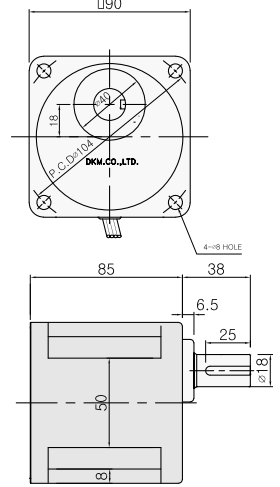
* GEARHEAD MODEL : 9PB □ 3BH - 9PB □ 180BH



* GEARHEAD MODEL : 9PF □ 3BH - 9PF □ 180BH

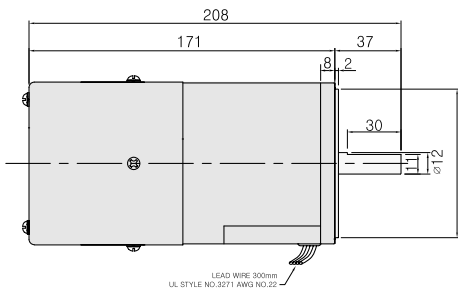


* GEARHEAD MODEL : 9HB □ 3BH - 9HB □ 180BH

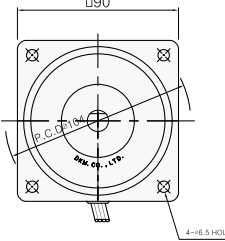


◆ MOTOR ONLY

* MOTOR MODEL : 9SRD□□-90F2 (POWERFUL FAN)

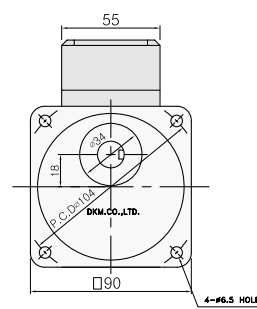
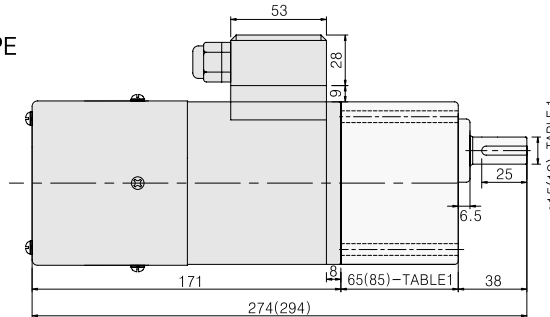


LEAD WIRE 300mm
UL STYLE NO.3271 AWG NO.22



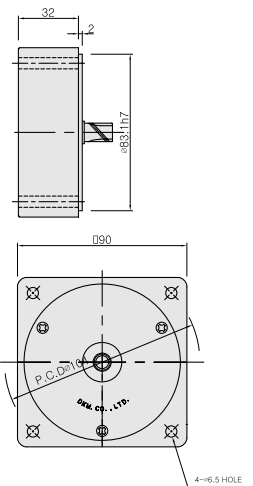
● TERMINAL BOX TYPE

* MOTOR MODEL : 9SRDG □-90F2P(H)-T (POWERFUL FAN)



◆ INTER-DECIMAL GEARHEAD

* MODEL : 9XD10M□



* Note : For speed control motor, powerful Fan(F2) is basic specification.

◆ 65(85)-TABLE 1

SIZE(mm)	GEARHEAD TYPE
65 - φ15	P TYPE GEARHEAD
85 - φ18	H TYPE GEARHEAD

◆ KEY SPEC

MOTOR	GEARHEAD

◆ WEIGHT

PART	WEIGHT(Kg)		
MOTOR	3.0		
DECIMAL GEARHEAD	0.5		
GEAR HEAD	GEARHEAD TYPE	P TYPE	H TYPE
	9P(H)□□ 3BH - 9P(H)□□ 9BH	1.3	1.45
9P(H)□□ 12.5BH - 9P(H)□□ 18BH	1.3	1.5	
9P(H)□□ 25BH - 9P(H)□□ 60BH	1.4	1.7	
9P(H)□□ 90BH - 9P(H)□□ 180BH	1.4	1.8	

◆ GEARHEAD OUTPUT

MODEL	P TYPE	H TYPE
ROUND TYPE		
9P(H)□□ 3BH ~ 9P(H)□□ 180BH		
D-CUT TYPE		
9P(H)□□ 3BH ~ 9P(H)□□ 180BH		
KEY TYPE		
9P(H)□□ K3BH ~ 9P(H)□□ K180BH		

◆ MOTOR OUTPUT

MODEL	SHAFT
GEAR TYPE	18.5(22)
9SRDG□ - 90□ P(H)	
ROUND TYPE	
9SRDS□-90□	
D-CUT TYPE	
9SRDD□-90□	
KEY TYPE	
9SRDK□-90□	

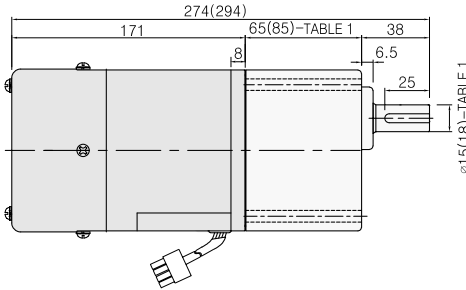
* Note : Above table indicates output shaft dimension made by user's request and ★ indicates the basic dimension in factory shipping.

6. 120W

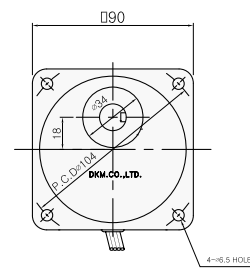
● LEAD WIRE TYPE

◆ GEARED MOTOR

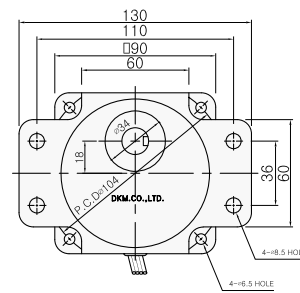
* MOTOR MODEL : 9SRDG□-120F2P(H) (POWERFUL FAN)



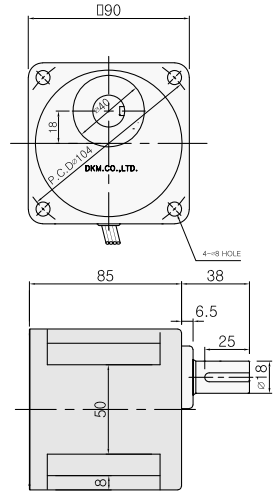
* GEARHEAD MODEL :
9PB □ 3BH - 9PB □ 180BH



* GEARHEAD MODEL :
9PF □ 3BH - 9PF □ 180BH

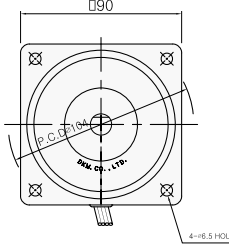
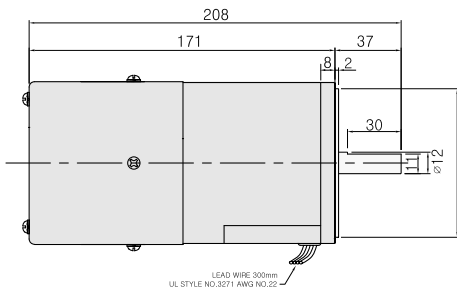


* GEARHEAD MODEL :
9HB □ 3BH - 9HB □ 180BH



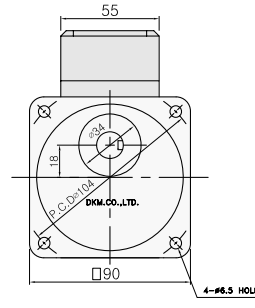
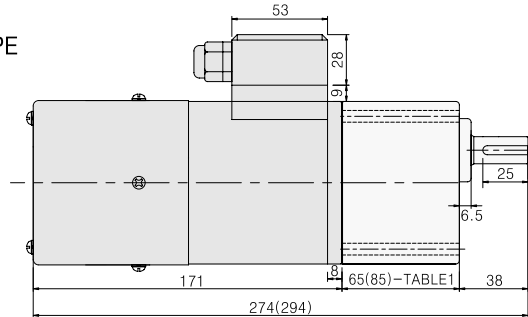
◆ MOTOR ONLY

* MOTOR MODEL : 9SRD□□-120F2 (POWERFUL FAN)



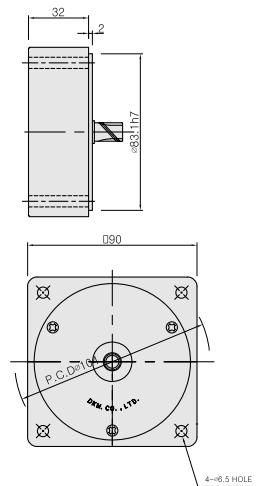
● TERMINAL BOX TYPE

* MOTOR MODEL :
9SRD□□-120F2P(H)-T
(POWERFUL FAN)



◆ INTER-DECIMAL GEARHEAD

* MODEL : 9XD10M□



* Note : For speed control motor, powerful Fan(F2) is basic specification.

◆ 65(85)-TABLE 1

SIZE(mm)	GEARHEAD TYPE
65 - φ15	P TYPE GEARHEAD
85 - φ18	H TYPE GEARHEAD

◆ KEY SPEC

MOTOR	GEARHEAD

◆ WEIGHT

PART	WEIGHT(Kg)		
MOTOR	3.0		
DECIMAL GEARHEAD	0.5		
GEAR HEAD	GEARHEAD TYPE	P TYPE	H TYPE
	9P(H)□□ 3BH - 9P(H)□□ 98BH	1.3	1.45
	9P(H)□□ 12.5BH - 9P(H)□□ 180BH	1.3	1.5
	9P(H)□□ 25BH - 9P(H)□□ 60BH	1.4	1.7
	9P(H)□□ 90BH - 9P(H)□□ 180BH	1.4	1.8

◆ GEARHEAD OUTPUT

MODEL	P TYPE	H TYPE
ROUND TYPE		
9P(H)□□ 3BH - 9P(H)□□ 180BH	38 φ15	38 φ18
D-CUT TYPE		
9P(H)□□ 3BH - 9P(H)□□ 180BH	38 φ15 14±0.1	38 φ18 17±0.1
KEY TYPE		
9P(H)□□ 3BH - 9P(H)□□ 180BH	38 25 φ15	38 25 φ18

◆ MOTOR OUTPUT

MODEL	SHAFT
GEAR TYPE	18.5(22)
9SRDG□-120□ P(H)	* 18.5 : P TYPE 22 : H TYPE
ROUND TYPE	
9SRDS□-120□	37 φ12
D-CUT TYPE	
9SRDD□-120□	37 30 φ12
KEY TYPE	
9SRDK□-120□	37 25 φ12

* Note : Above table indicates output shaft dimension made by user's request and ★ indicates the basic dimension in factory shipping.